

Multi-Purpose & Pulp Vessel

62K TYPE (a)



Ship's Name	Built	IMO No.	Flag	Ship's Name	Built	IMO No.	Flag
中远海运开拓 ZHONG YUAN HAI YUN KAI TUO	2019	9837640	P.R.CHINA	中远海运兴仁 COSCO SHIPPING XINGREN	2020	9872183	P.R.CHINA
中远海运创新 ZHONG YUAN HAI YUN CHUANG XIN	2019	9837652	P.R.CHINA	中远海运锦程 COSCO SHIPPING PENGCHENG	2020	9872195	P.R.CHINA
中远海运进取 ZHONG YUAN HAI YUN JIN QU	2019	9846495	P.R.CHINA	中远海运辉煌 COSCO SHIPPING GLORY	2020	9881641	HONG KONG
中远海运卓越 COSCO SHIPPING ZHUO YUE	2019	9872157	P.R.CHINA	中远海运荣耀 COSCO SHIPPING HONOR	2020	9881653	HONG KONG
中远海运锦绣 COSCO SHIPPING JIN XIU	2019	9872169	P.R.CHINA	中远海运和谐 COSCO SHIPPING HARMONY	2021	9881665	HONG KONG
中远海运长青 COSCO SHIPPING CHANGQING	2020	9872171	P.R.CHINA	中远海运远景 COSCO SHIPPING VISION	2021	9881677	HONG KONG

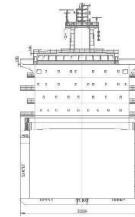


MAIN DATA

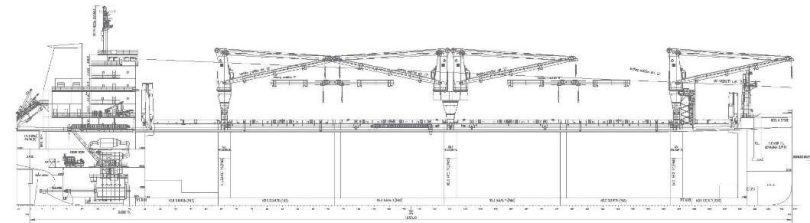
Classification	CCS, General Cargo Ship, Double Side Skin, Equipped with Container Securing Arrangement, Strengthened for Heavy Cargoes	Cargo Hold Capacity	72,608 m ³
GRT/NRT	40,250 / 18,221 mt	Floor Space Deck	7,425 m ²
Deadweight	62,050 mt	Cranes	4 TTS Cranes Situated Midships 75 mt x 4, Comb. 150 mt SWL
Max Draft (Summer)	13.30 m	Container intake	473 TEU (On Deck)
LOA	201.80 m	Deck Strengths	20.00 mt on Tank Top 3.00 mt on Hatch Cover
Breadth Moulded	32.26 m	Hold Ventilation	Mechanical Ventilation
Depth to Main Deck	19.30 m	Dehumidification	the maximum air supply is 30,000 m ³ /hr
Height above Keel	53.93 m		
Speed	13.50 kn		

* All above details are in good faith but without guarantee.
 * All details including speed are given in good faith and are "about" and are given without guarantee. They must not be used as basis for charterparties or contracts without COSCO SHIPPING SPECIALIZED CARRIERS CO., LTD.'s explicit written authority.

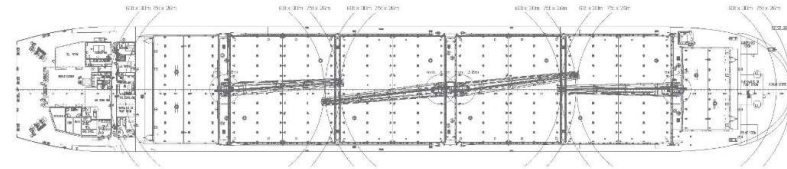
Transverse Section



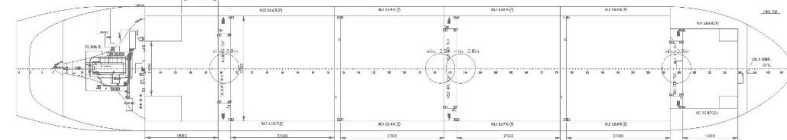
Side View



Main Deck



Tank top



Multi-Purpose & Pulp Vessel

62K TYPE (b)



Ship's Name	Built	IMO No.	Flag	Ship's Name	Built	IMO No.	Flag
中远海运优雅 COSCO SHIPPING GRACE	2021	9928865	HONG KONG	中远海运繁荣 COSCO SHIPPING FAN RONG	2022	9928906	P.R. CHINA
中远海运挚诚 COSCO SHIPPING SINCERE	2022	9928877	HONG KONG	中远海运昌盛 COSCO SHIPPING CHANG SHENG	2022	9928918	P.R. CHINA
中远海运智慧 COSCO SHIPPING WISDOM	2022	9928889	HONG KONG	中远海运蓬勃 COSCO SHIPPING PENG BO	2023	9928920	P.R. CHINA
中远海运源泉 COSCO SHIPPING FOUNTAIN	2022	9928891	HONG KONG	中远海运腾达 COSCO SHIPPING TENG DA	2023	9928932	P.R. CHINA

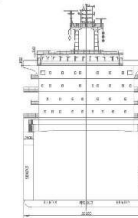


MAIN DATA

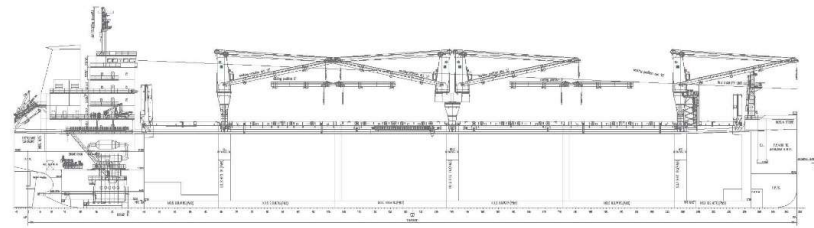
Classification	CCS, Ice Class B, General Cargo Ship, Double Side Skin, Equipped with Container Securing Arrangement, Strengthened for Heavy Cargoes	Cargo Hold Capacity	71,216 m ³
GRT/NRT	40,350 / 17,897 mt	Floor Space Deck	7,500 m ²
Deadweight	61,610 mt	Cranes	4 TTS Cranes Situated Midships 100 mt x 2 + 75 mt x 2, Comb. 150 mt SWL
Max Draft (Summer)	13.30 m	Container intake	473 TEU (On Deck)
LOA	201.80 m	Deck Strengths	20.00 mt on Tank Top 3.00 mt on Hatch Cover
Breadth Moulded	32.26 m	Hold Ventilation	Mechanical Ventilation
Depth to Main Deck	19.30 m	Dehumidification	the maximum air supply is 30,000 m ³ / hr
Height above Keel	54.45 m		
Speed	13.50 kn		

*All above details are in good faith but without guarantee.
*All details including speed are given in good faith and are "about" and are given without guarantee. They must not be used as basis for charterparties or contracts without COSCO SHIPPING SPECIALIZED CARRIERS CO., LTD.'s explicit written authority.

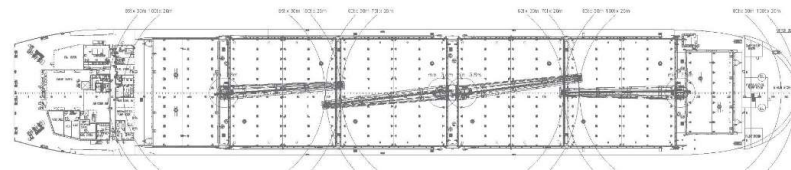
Transverse Section



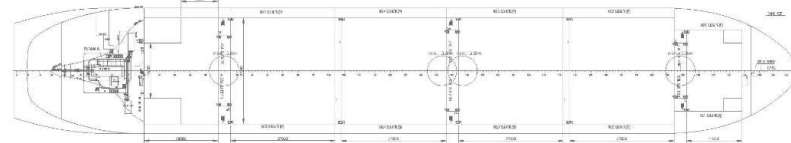
Side View



Main Deck



Tank top



Multi-Purpose & Pulp Vessel

64K TYPE



Ship's Name	Built	IMO No.	Flag	Ship's Name	Built	IMO No.	Flag
鼎商 GREAT SHANG	2016	9766906	PANAMA	鼎汉 GREAT HAN	2017	9766920	PANAMA
鼎泰 GREAT QIN	2017	9766918	PANAMA	鼎周 GREAT ZHOU	2017	9766932	PANAMA

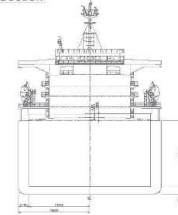


MAIN DATA

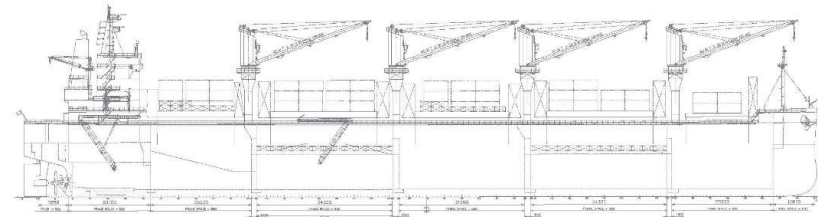
Classification	CCS, General Cargo Ship	Cargo Hold Capacity	74,884 m ³
GRT/NRT	39,377 / 19,512 mt	Cranes	4 Cranes Situated Midships, 40 mt x 4 Comb. 80 mt SWL (GREAT SHANG and GREAT QIN)
Deadweight	64,940 mt		4 Cranes Situated Midships, 40 mt x 2, 75 mt x 2 Comb. 150 mt SWL (GREAT HAN and GREAT ZHOU)
Max Draft (Summer)	13.00 m	Container intake	494 TEU (On Deck)
LOA	199.99 m		
Breadth Moulded	36.00 m		
Depth to Main Deck	18.54 m		
Height above Keel	51.63 m		
Speed	13.50 kn		

*All above details are in good faith but without guarantee.
*All details including speed are given in good faith and are "about" and are given without guarantee. They must not be used as basis for charterparties or contracts without COSCO SHIPPING SPECIALIZED CARRIERS CO., LTD.'s explicit written authority.

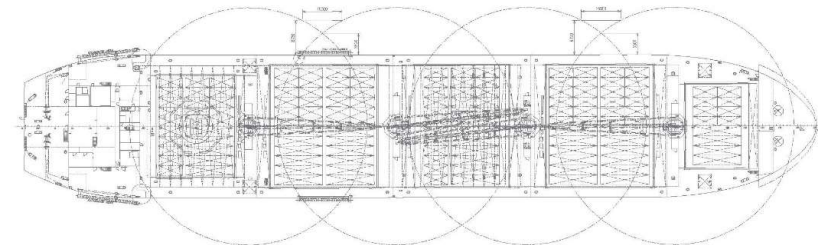
Transverse Section



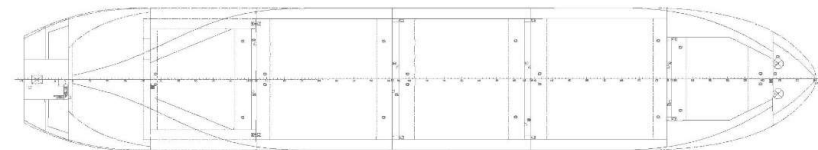
Side View



Upper Deck



Hold



Multi-Purpose & Pulp Vessel

38K TIAN TYPE (a)



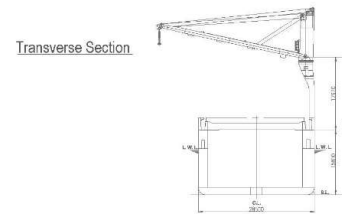
Ship's Name	Built	IMO No.	Flag	Ship's Name	Built	IMO No.	Flag
天福 TIAN FU	2015	9704738	LIBERIA	天寿 TIAN SHOU	2016	9704752	LIBERIA
天禄 TIAN LU	2015	9704740	LIBERIA	天禧 TIAN XI	2016	9704764	LIBERIA



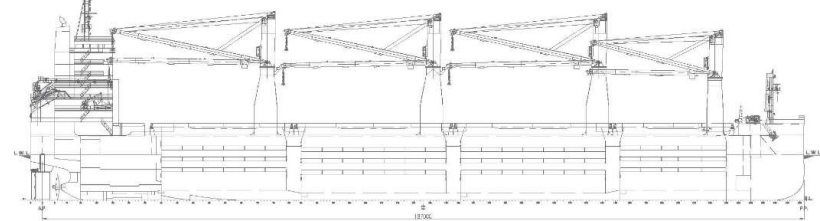
MAIN DATA

Classification	CCS, Ice Class B, General Cargo Ship, Double Side Skin, Strengthened for Heavy Cargoes, Equipped with Container Securing Arrangement	Cargo Hold Capacity	45,147 m ³
GRT/NRT	26,600 / 11,395 mt	Floor Space Deck	8,780 m ²
Deadweight	38,150 mt	Cranes	4 MacGregor Cranes Situated Portside 80 mt x 1, 100 mt x 3, Comb. 200 mt SWL
Max Draft (Summer)	11.00 m	Container intake	1,015 TEU (On Deck)
LOA	189.99 m	Deck Strengths	20.00 mt on Tank Top 3.00 mt on Tween Deck 3.00 mt on Hatch Cover
Breadth Moulded	28.50 m		
Depth to Main Deck	15.80 m		
Height above Keel	53.43 m		
Speed	13.77 kn		

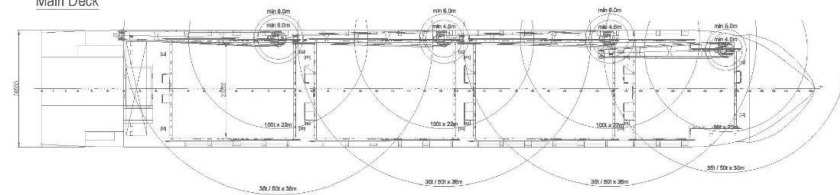
* All above details are in good faith but without guarantee.
 * All details including speed are given in good faith and are "about" and are given without guarantee. They must not be used as basis for charterparties or contracts without COSCO SHIPPING SPECIALIZED CARRIERS CO., LTD.'s explicit written authority.



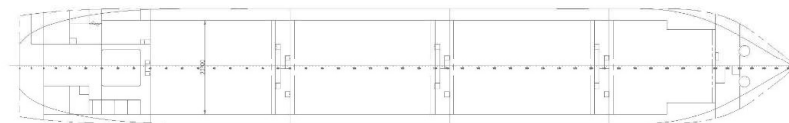
Side View



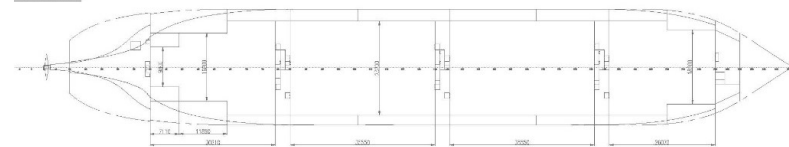
Main Deck



Tween Deck / Middle



Lower Hold



Multi-Purpose & Pulp Vessel

38K TIAN TYPE (b)

Ship's Name	Built	IMO No.	Flag	Ship's Name	Built	IMO No.	Flag
天真 TIAN ZHEN	2016	9722728	P.R.CHINA	天祺 TIAN QI	2016	9722742	P.R.CHINA
天乐 TIAN LE	2016	9722730	P.R.CHINA	天健 TIAN JIAN	2016	9722754	P.R.CHINA



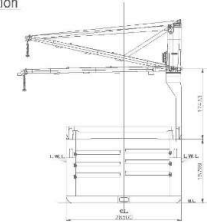
MAIN DATA

Classification	CCS, Ice Class B, General Cargo Ship, Double Side Skin, Strengthened for Heavy Cargoes, Equipped with Container Securing Arrangement	Cargo Hold Capacity	45,179 m ³
GRT/NRT	26,770 / 11,416 mt	Floor Space Deck	8,779 m ²
Deadweight	37,980 mt	Cranes	4 MacGregor Cranes Situated Portside 80 mt x 1, 100 mt x 3, Comb. 200 mt SWL
Max Draft (Summer)	11.00 m	Container intake	1,015 TEU (On Deck)
LOA	189.99 m	Deck Strengths	20.00 mt on Tank Top 3.00 mt on Tween Deck 3.00 mt on Hatch Cover
Breadth Moulded	28.50 m		
Depth to Main Deck	15.80 m		
Height above Keel	52.50 m		
Speed	14.00 kn		

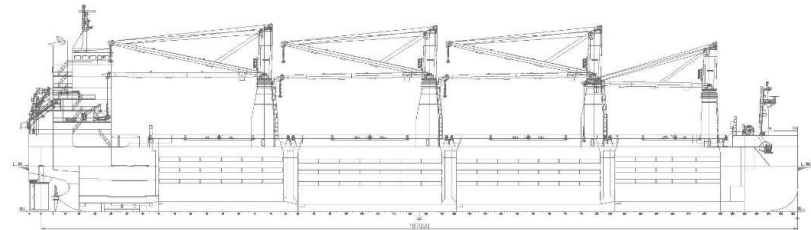
* All above details are in good faith but without guarantee.
* All details including speed are given in good faith and are "about" and are given without guarantee. They must not be used as basis for charterparties or contracts without COSCO SHIPPING SPECIALIZED CARRIERS CO., LTD.'s explicit written authority.



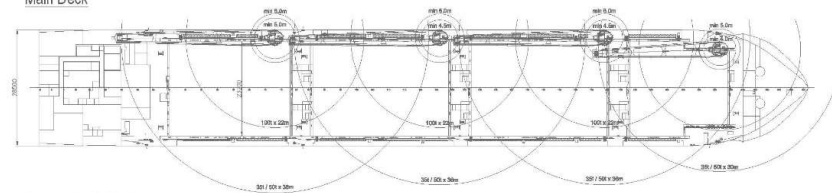
Transverse Section



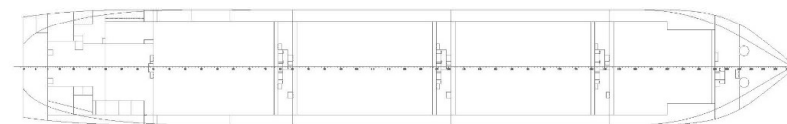
Side View



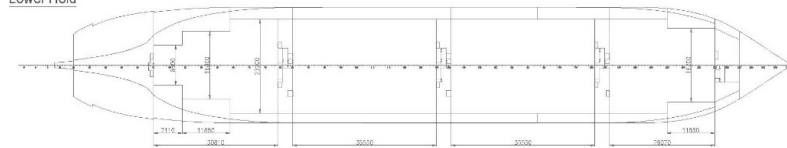
Main Deck



Tween Deck / Middle



Lower Hold



Multi-Purpose & Pulp Vessel

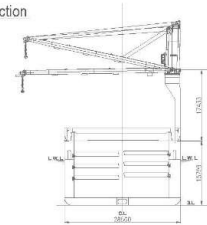
38K TIAN TYPE *Ice**



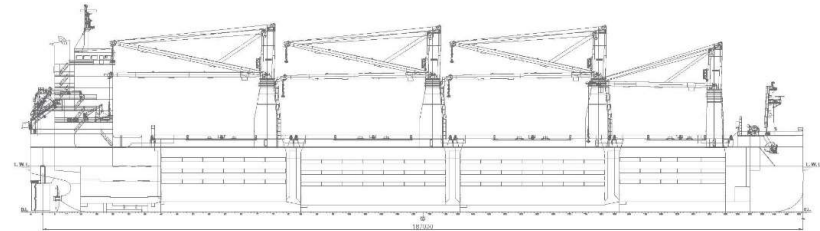
Ship's Name	Built	IMO No.	Flag	Ship's Name	Built	IMO No.	Flag
天恩 TIAN EN	2017	9774587	P.R.CHINA	天佑 TIAN YOU	2018	9823625	P.R.CHINA
天惠 TIAN HUI	2017	9774599	P.R.CHINA				



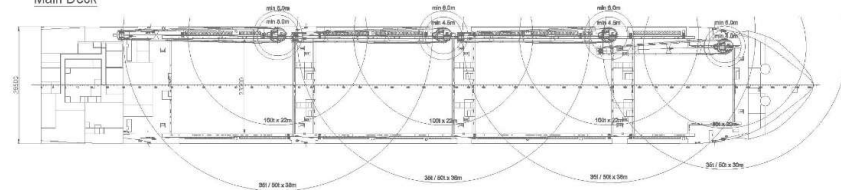
Transverse Section



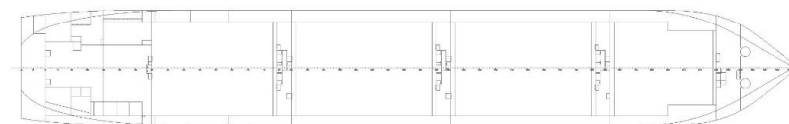
Side View



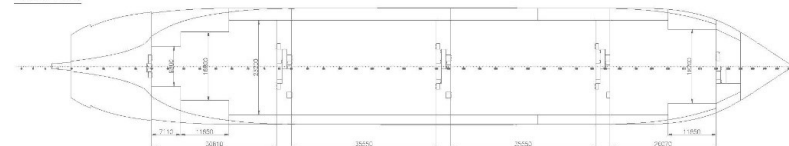
Main Deck



Tween Deck / Middle



Lower Hold



MAIN DATA

Classification	CCS, Ice Class B1, General Cargo Ship, Double Side Skin, Strengthened for Heavy Cargoes, Equipped with Container Securing Arrangement	Cargo Hold Capacity	45,179 m ³
GRT/NRT	26,787 / 11,415 mt	Floor Space Deck	8,779 m ²
Deadweight	37,120 mt	Cranes	4 MacGregor Cranes Situated Portside 80 mt x 1, 100 mt x 3, Comb. 200 mt SWL
Max Draft (Summer)	11.00 m	Container intake	1,015 TEU (On Deck)
LOA	189.99 m	Deck Strengths	20.00 mt on Tank Top 3.00 mt on Tween Deck 3.00 mt on Hatch Cover
Breadth Moulded	28.50 m		
Depth to Main Deck	15.80 m		
Height above Keel	52.10 m		
Speed	15.00 kn		

* All above details are in good faith but without guarantee.
* All details including speed are given in good faith and are "about" and are given without guarantee. They must not be used as basis for charterparties or contracts without COSCO SHIPPING SPECIALIZED CARRIERS CO., LTD.'s explicit written authority.

Multi-Purpose & Pulp Vessel

29K LE TYPE



Ship's Name	Built	IMO No.	Flag	Ship's Name	Built	IMO No.	Flag
乐宜 LE YI	2000	9192662	P.R.CHINA	乐从 LE CONG	2000	9192686	P.R.CHINA
乐里 LE LI	2000	9192674	P.R.CHINA	乐和 LE HE	2001	9192698	P.R.CHINA



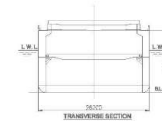
MAIN DATA

Classification	CCS, Ice Class B, General Cargo Ship, Strengthened for Heavy Cargoes, Equipped with Container Securing Arrangement
GRT/NRT	19,955 / 9,412 mt
Deadweight	29,470 mt
Max Draft (Summer)	10.02 m
LOA	182.67 m
Breadth Moulded	26.20 m
Depth to Main Deck	14.70 m
Height above Keel	48.85 m
Speed	13.10 kn

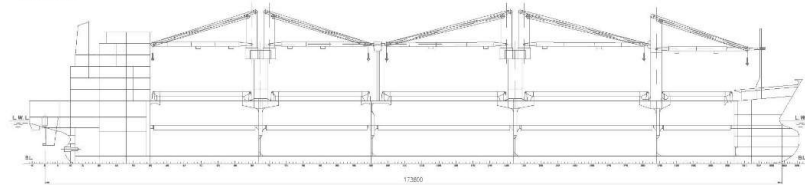
Cargo Hold Capacity	36,910 m ³
Cranes	5 MacGregor Cranes Situated Midships 35 mt x 5, Comb. 70 mt SWL
Container intake	1,089 TEU (50 reefer plugs) 494 TEU (On Deck), 595 TEU (In Holds)
Deck Strengths	20.00 mt on Tank Top 4.00 mt on Tween Deck 2.50 mt on Hatch Cover

* All above details are in good faith but without guarantee.
* All details including speed are given in good faith and are "about" and are given without guarantee. They must not be used as basis for charterparties or contracts without COSCO SHIPPING SPECIALIZED CARRIERS CO., LTD.'s explicit written authority.

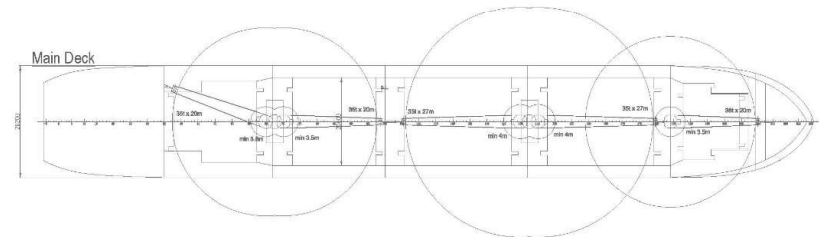
Transverse Section



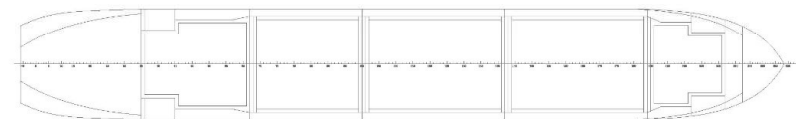
Side View



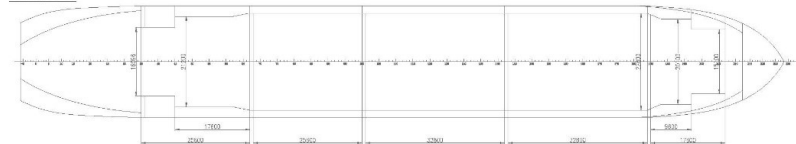
Main Deck



Tween Deck / Middle



Lower Hold



Multi-Purpose & Pulp Vessel

68K TYPE (Ice*)



Ship's Name	Built	IMO No.	Flag	Ship's Name	Built	IMO No.	Flag
中远海运凯兴 GREAT KEMI	2023	9976044	PANAMA	中远海运劳马 GREAT RAUMA	2023	9976070	PANAMA
中远海运科卡 GREAT KOTKA	2023	9976056	PANAMA	中远海运艾奈科斯基 GREAT AÄNEKOSKI	2024	9976082	PANAMA
中远海运赫尔辛基 GREAT HELSINKI	2023	9976088	PANAMA				



MAIN DATA

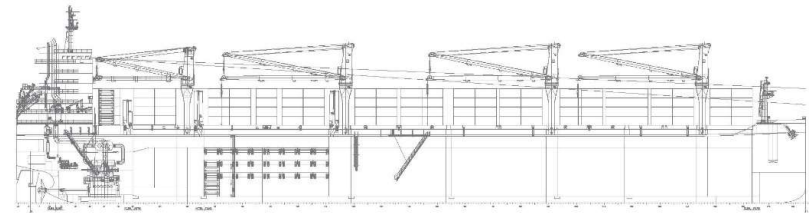
Classification	CCS, Ice Class: B1, General Dry Cargo Ship, Double Side Skin, Equipped with Container Securing Arrangement, Strengthened for Heavy Cargoes	Cargo Hold Capacity	78,000 m ³
Deadweight	Abt 68,000 mt	Cranes	4 sets Cranes 75 mt SWL
Designed Draft	11.50 m	Container intake	900 TEU (On Deck), 1,689 TEU (In Holds)
Scantling Draft	13.30 m	Dehumidification Equipment	2* 7,500 m ³ / hr
LOA	226.80 m		
Breadth Moulded	32.26 m		
Depth to Main Deck	19.30 m		
Speed	13.50 kn		

*All above details are in good faith but without guarantee.
 *All details including speed are given in good faith and are "about" and are given without guarantee. They must not be used as basis for charterparties or contracts without COSCO SHIPPING SPECIALIZED CARRIERS CO., LTD.'s explicit written authority.

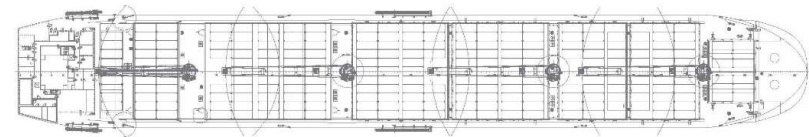
Transverse Section



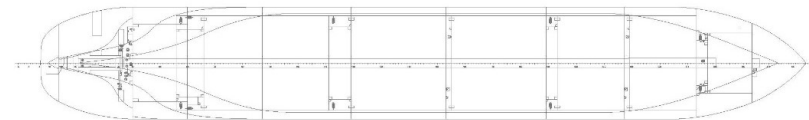
Side View



Main Deck



Tank top



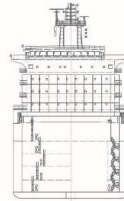
Multi-Purpose & Pulp Vessel

77K TYPE

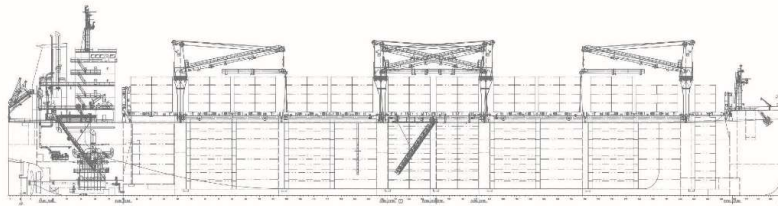
MAIN DATA

Deadweight	Abt 76,500 mt
Designed Draft	10.00 m
Scantling Draft	14.50 m
LOA	225.00 m
Breadth Moulded	32.26 m
Depth to Main Deck	20.70 m
Speed	15.00 kn

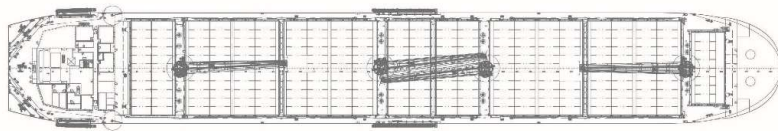
Transverse Section



Side View



Upper Deck



Tark Top



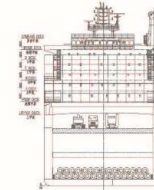
Multi-Purpose & Heavy Lift Vessel

62K TYPE

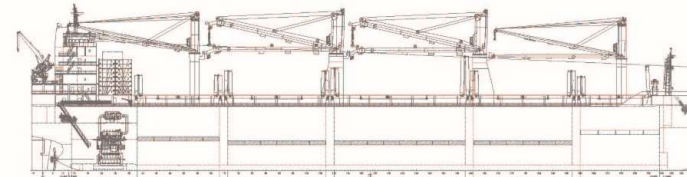
MAIN DATA

Classification	DNV. +1A, General Dry Cargo Ship, Strengthened (IB), ER (SCR,T3)
Deadweight	Abt 61,250 mt
Designed Draft	11.30 m
Scantling Draft	13.50 m
LOA	199.90 m
Breadth Moulded	32.26 m
Depth to Main Deck	19.30 m
Max Speed	14.40 kn
Container intake	804 TEU (On Deck)

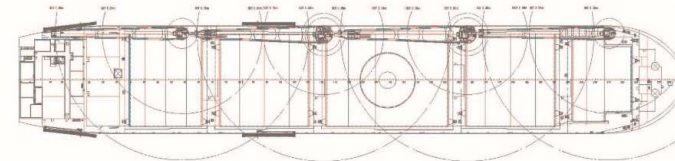
Transverse Section



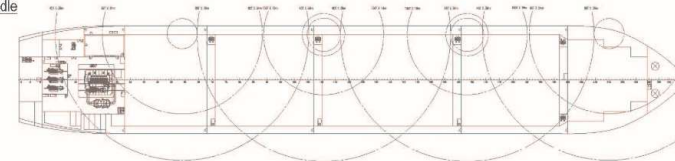
Side View



Main Deck



Tween Deck / Middle



Lower Hold

